

A close-up photograph of a young child and an adult sitting together, looking at an open picture book. The child, wearing a colorful striped shirt, is pointing at a page with various animal illustrations. The adult, wearing a dark jacket, is also pointing at the book. The book shows illustrations of a dog, a frog, a bird, a fish, and a bear. The background is dark and out of focus.

Risk Management and Child Safeguarding

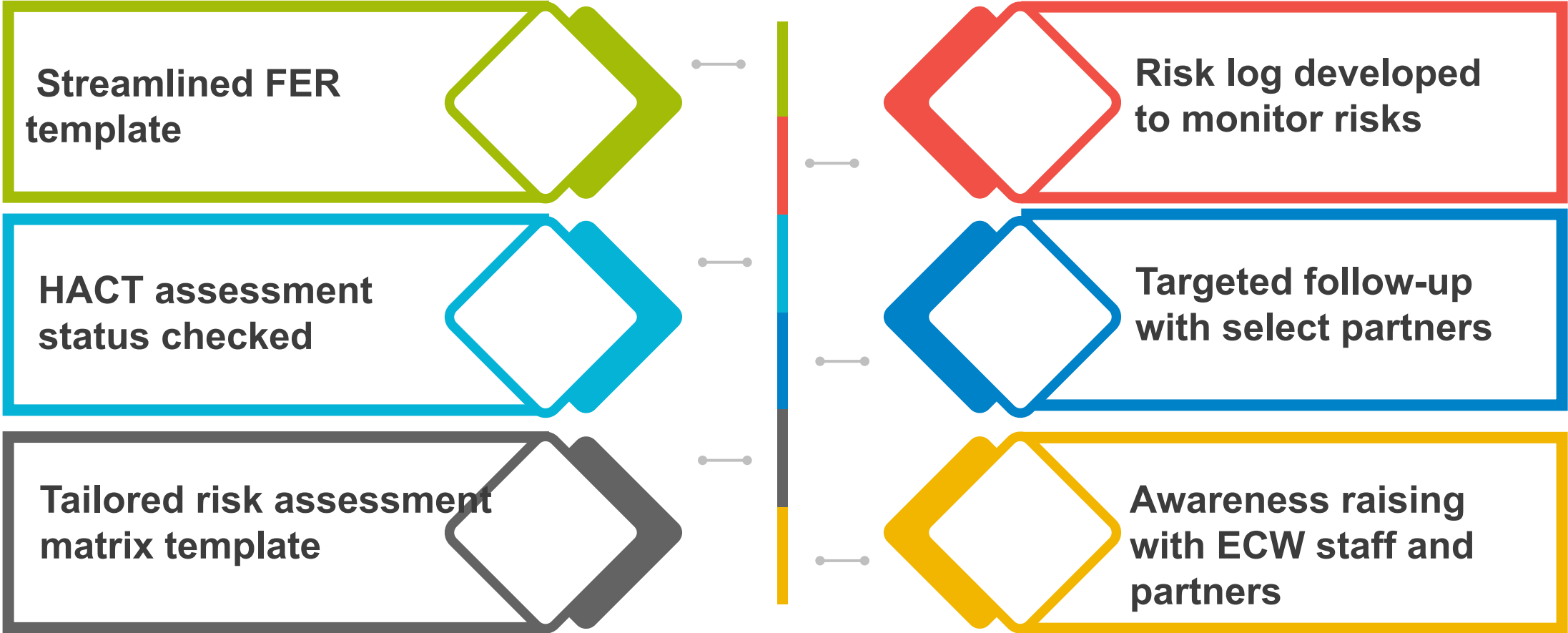
ExCom Meeting, 23-24 June 2020

Part 1

Risk Management

COVID-19 FER PHASE 1

Risk Management Approach



Key portfolio-level COVID-19 risks

- **Context:** safety and security of personnel
- **Delivery:** ability to access beneficiaries and sites
- **Child safeguarding:** risks of harm to children
- **Fiduciary:** potential reliance on cash funds



Part 2

Child Safeguarding

CHILD SAFEGUARDING

Organisational risk management

Governance practices, HR standards, safe recruitment practices, staff training, leadership



Programme risk management

Taking a risk-management approach to programme design and implementation

MODEL CHILD SAFE ORGANISATION



8. CAPACITY BUILDING

7. RISK-BASED APPROACH

6. MINIMUM STANDARDS

5. PARTICIPATION

1. LEADERSHIP

2. CHILD SAFEGUARDING POLICY

3. CODE OF CONDUCT & HR PROCEDURES

4. REPORTING AND RESPONSE MECHANISMS

ECW: child safeguarding approach

Component	ECW Secretariat	Requirements - ECW grantees
1. Leadership	<ul style="list-style-type: none">• Strong Senior Executive commitment and role modelling of a zero tolerance approach	<ul style="list-style-type: none">• Grant Confirmation Letter (GCL)
2. Policy	<ul style="list-style-type: none">• <i>2016 Policy on Conduct Promoting the Protection and Safeguarding of Children (UNICEF)</i>• <i>2019 Strategy to Prevent and Respond to Sexual Exploitation and Abuse and Sexual Harassment (UNICEF)</i>	<ul style="list-style-type: none">• GCL and FER/MYRP/ACF proposal requirements• Ensure implementing partners have a child safeguarding/protection policy in place

ECW: child safeguarding approach

Component	ECW Secretariat	Requirements - ECW grantees
3. Code of Conduct, HR procedures and employment contracts	<ul style="list-style-type: none">• UNICEF Personnel Standards• UNICEF Recruitment practices• UNICEF HR disciplinary procedures• UNICEF employment contracts	<ul style="list-style-type: none">• GCL terms and FER/MYRP/AF proposal requirements• Must confirm a code of conduct is in place• Ensure implementing partners apply codes of conduct
4. Reporting and response mechanisms	<ul style="list-style-type: none">• Mandatory reporting for staff• Case management process – management of sensitive data• Reporting to donors	<ul style="list-style-type: none">• Investigate, provide a survivor-centred response and report all notifications• Reporting template• Secure safeguarding@un-ecw.org email address

ECW: child safeguarding approach

Component	ECW Secretariat	Requirements - ECW grantees
5. Participation of children and communities	<ul style="list-style-type: none">Ongoing discussions to determine how best to achieve	<ul style="list-style-type: none">Partners incorporate in program design – needs to be considered on a case-by-case basis
6. Minimum standards	<ul style="list-style-type: none">Development of minimum standards with indicators and guidance tools – collective effort with civil society partners	<ul style="list-style-type: none">Expected to use these as a framework to guide child safeguarding workCompliance checks will be undertaken against these minimum standards



ECW: child safeguarding approach

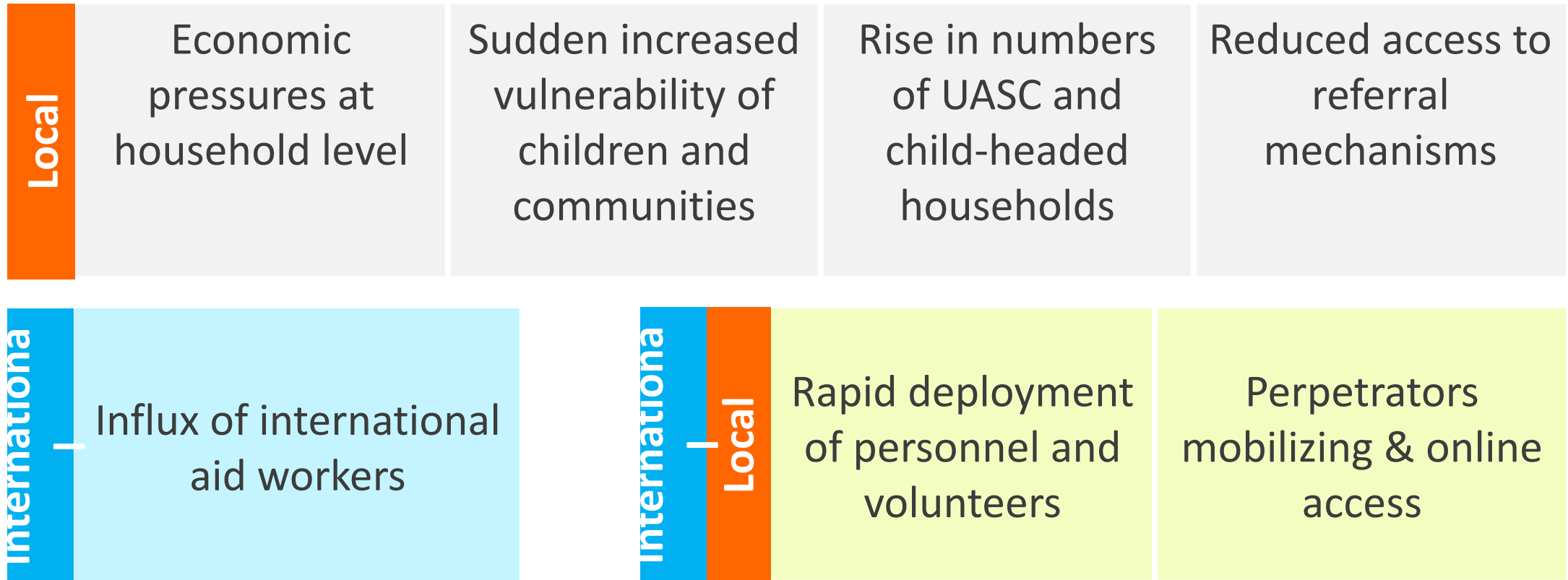
Component	ECW Secretariat	Requirements - ECW grantees
7. Risk-based approach to operations, program design/ implementation	<ul style="list-style-type: none">• Integrate a risk-based approach into funding windows• Conduct due diligence on grantees and ongoing discussions• Raise awareness with staff and partners on risk reduction	<ul style="list-style-type: none">• Child safeguarding measures must be adopted and operationalised• Include risks to children in program risk assessments• Ensure implementing partners have child safeguarding measures in place• Raise awareness with implementing partners
8. Capacity building	<ul style="list-style-type: none">• Mandatory staff training on child safeguarding• Regular briefings• Messaging from Director	<ul style="list-style-type: none">• Ensure personnel (including volunteers) are trained on child safeguarding• Commitment to support implementing partners through capacity building/strengthening• Establish communities of practice

Contextual analysis

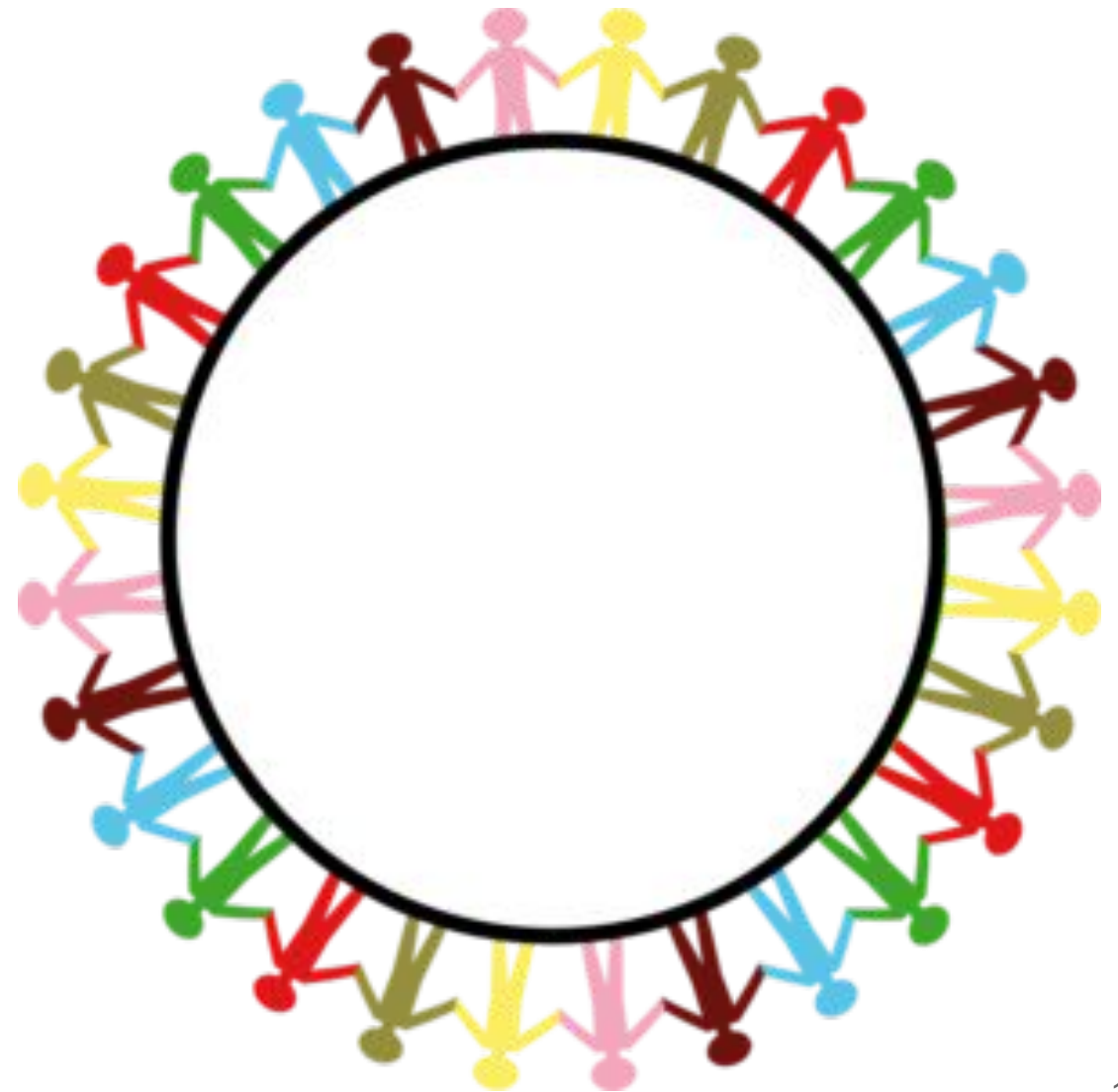


Heightened sexual abuse and exploitation

risk factors under COVID-19



**Child safeguarding is
EVERYONE's
responsibility!**



Questions and comments

Educationcannotwait.org | [@EduCannotWait](https://twitter.com/EduCannotWait)

